

ROTTLER

THE CUTTING EDGE

F69A CR

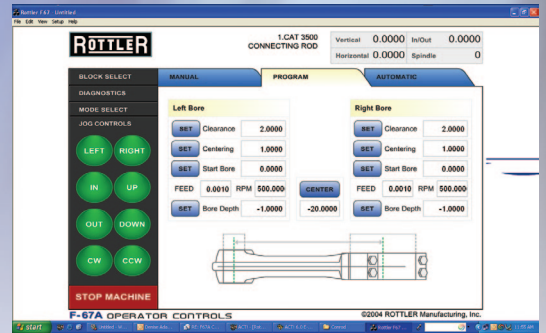
Connecting Rod Machining



Performance Racing and Engine Remanufacturing Machinery and Equipment



Rottler's Controls use 'state of the art' Direct Motion Control Technology and Windows 7 Operating System.



**Connecting Rod
Touch Screen Control**



**Connecting Rod Fixture
Control Panel**



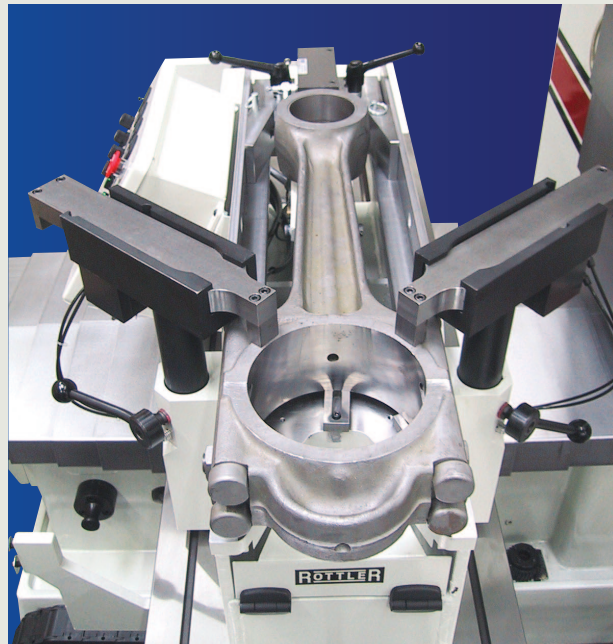
Waukesha AT



Special double diameter cutterheads allow both big end and small end to be bored in one automatic cycle. These cutterheads have pre-settable cartridges and can be adjusted in .0002" (.005mm).

Connecting Rod Fixtures

- Rottler's patented Connecting Rod Fixture allows large conrods to be bored on various machines including the Rottler F60, F80 and F90 Series Machines.
- Conrod is clamped horizontally with reference to the thrust face of the big end and both the small and big ends are bored in one set up resulting in perfect parallelism between the small and big end bores, and ensuring that the big end bore is square to the crankshaft thrust face.
- Center to center distance can be easily controlled for exact same distance for each rod in a set - a must for today's high compression diesels. When used on Rottler F60, F80 and F90 machines, center to center distance can be programmed into the machine's control memory.
- Automatic alignment and centering devices allow quick set up with reference to the center of the conrod half of the big end and the small end. After clamping, the centering devices lower out of the way so both big and small ends can be bored in one set up.
- Adjusts easily for large connecting rods from approximately 8" - 24" (200mm - 600mm) center to center distance
- Both the big and small end, of the size conrod shown on the right, can be bored floor to floor in 3.5 - 5 minutes.



Perfect Parallelism
Precise Center to Center Distance
Precision Connecting Rods
Productive Results

September 2011

www.rottlermfg.com

www.youtube.com/rottlermfg
www.facebook.com/rottlermfg
email: contact@rottlermfg.com

8029 South 200th Street
Kent, Washington 98032 USA
+1 253 872 7050

Represented by:

1-800-452-0534